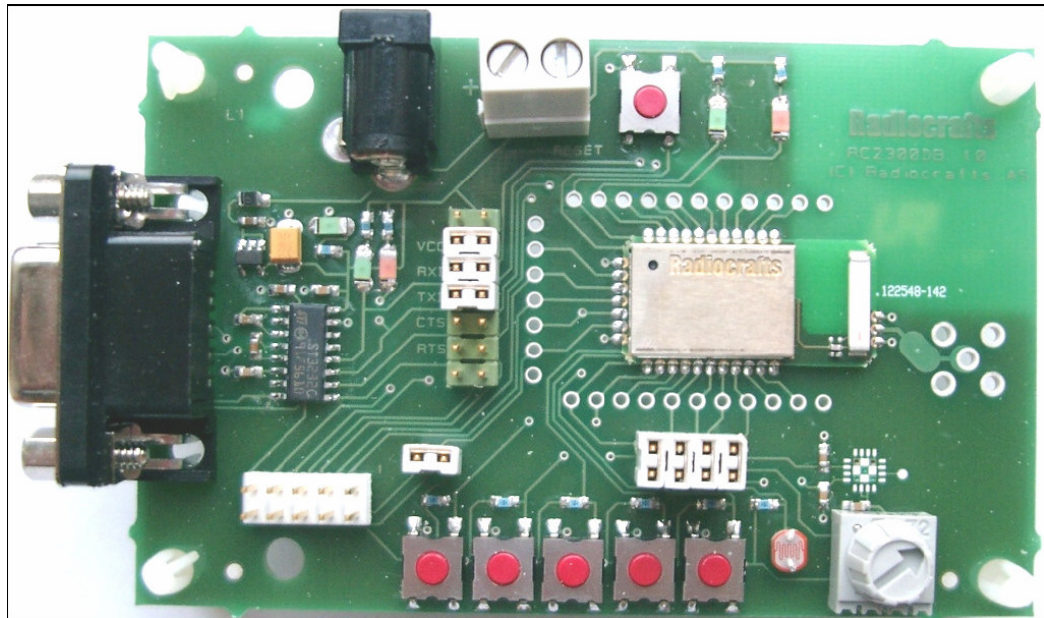


RC2300DK- ZigBee®-ready Demonstration Kit Quick Start



Introduction

The RC2300DK demonstration kit includes a preloaded program to enable simple RF range tests. This document is a guide to using the preloaded FW.

Other FW can be downloaded to the module when using the kit as a development kit. Please see User Guide for more info on this.

Quick Start Guide

To use the simple test FW follow the steps below:

1. Connect the RS232 port to a PC using a 1:1 serial cable for each board (can also be an emulated RS232 over USB).
2. Start a terminal program on the PC (like Microsoft HyperTerminal) for each board. Settings should be as shown in figure 1 and 2.

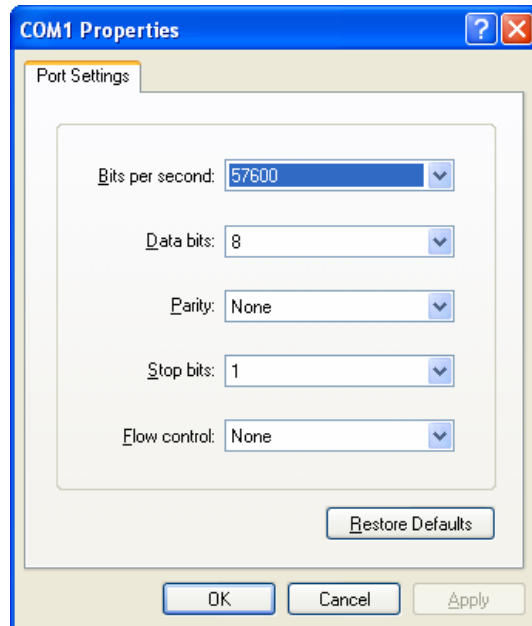


Figure 1 Com port settings

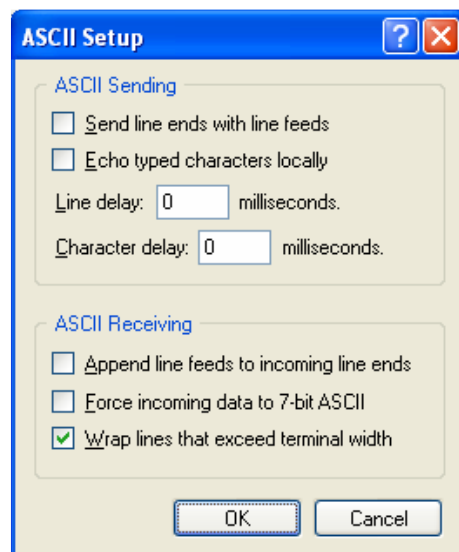
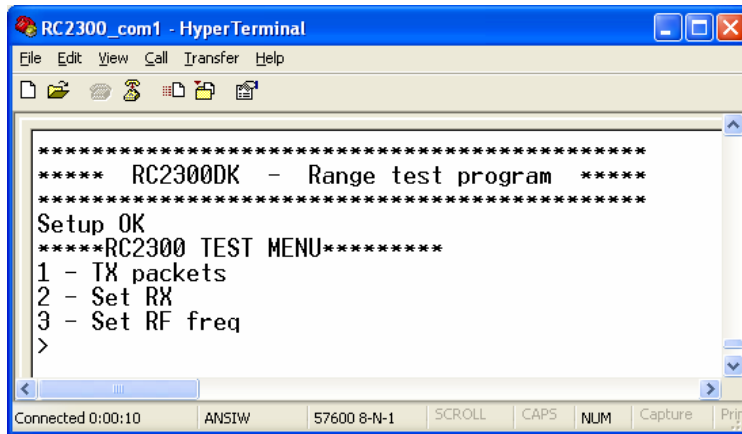


Figure 2 ACSII setup

- Put the battery eliminator in the wall outlet socket. Connect the battery eliminator plug to the DC jack. The green LED close to the DC jack will light up when the power source is OK.

The following should appear in the HyperTerminal window:



4. Set the frequency by pressing “3” (a list of channels will appear) and then by pressing the “number” corresponding to the wanted channel. The same channel must be set on each board.
5. For one of the boards press “1” to start packet transmission (The transmitter can now be disconnected from the RC232 cable if it needs to be mobile – A reset/power off-on will require a new setup from HyperTerminal)
6. For the second board press “2” to start receiving

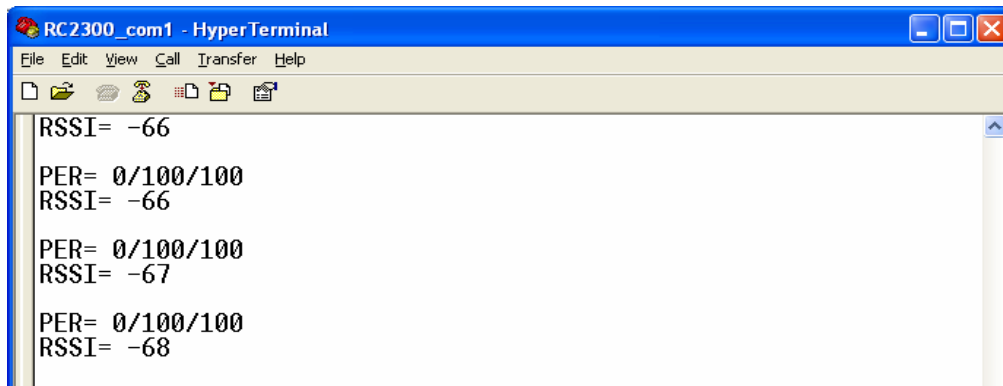


Figure 3 Screen shot when receiving

PER = B/G/N

- B = Bad packages (CRC Not OK)/Lost packages
- G = Good packages (CRC OK)
- N = Number of sent packages (Always 100)

RSSI = Received signal strength indication

Contact Information

Radiocrafts AS
Sandakerveien 64
NO-0484 OSLO
NORWAY

www.radiocrafts.com
radiocrafts@radiocrafts.com

Tel: +47 4000 5195
Fax: +47 22 71 29 15

ZigBee® is a trademark of the ZigBee Alliance. © 2007, Radiocrafts AS. All rights reserved.