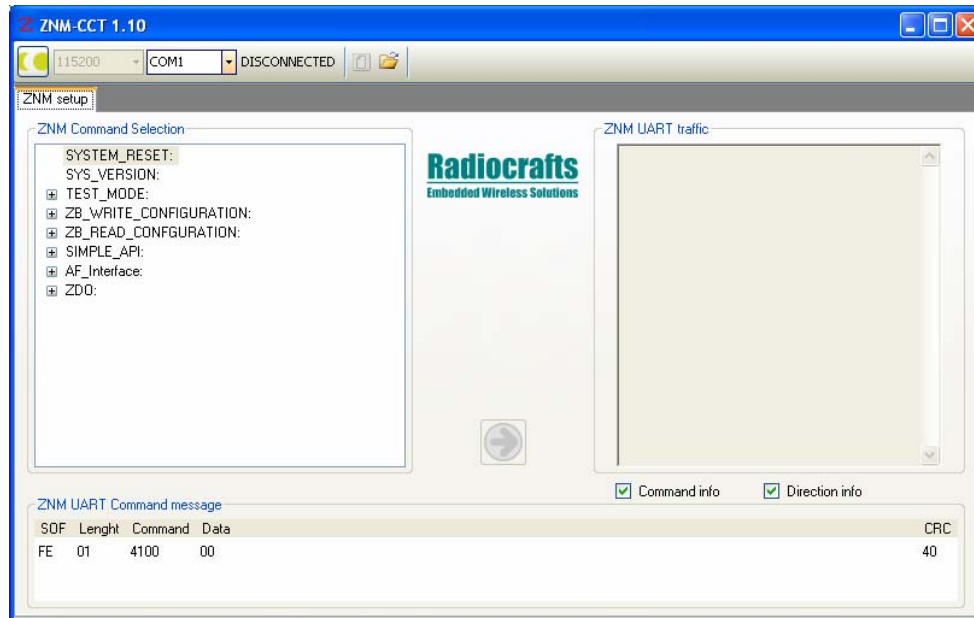


## ZNM-CCT (Configuration and Communication Tool) User Manual



### Table of Contents

TABLE OF CONTENTS.....	1
INSTALLATION GUIDE.....	2
INTRODUCTION.....	2
GETTING STARTED WITH ZNM-CCT.....	2
MAIN WINDOW, GUI.....	3
ZNM COMMAND FILE.....	4
DOCUMENT REVISION HISTORY.....	9
DISCLAIMER.....	9
TRADEMARKS.....	9
LIFE SUPPORT POLICY.....	9
CONTACT INFORMATION.....	9

## Installation Guide

ZNM-CCT (Configuration and Communication Tool) is a PC suite tailored for use with Radiocrafts RC24xx-ZNM RF Modules.

For full installation procedure please read the RCTools Installation Guide available at [www.radiocrafts.com](http://www.radiocrafts.com).

The ZNM-CCT requires access to the modules UART via an available COM-port. Typically UART-access is obtained via an UART-to-RS232 or UART-to-USB converter. The Demo Boards (DB) from Radiocrafts contains an on-board level shifter for direct plug-in to a PC and further access to the related COM-port.

This version of the User Manual applies to version 1.10 of ZNM-CCT.

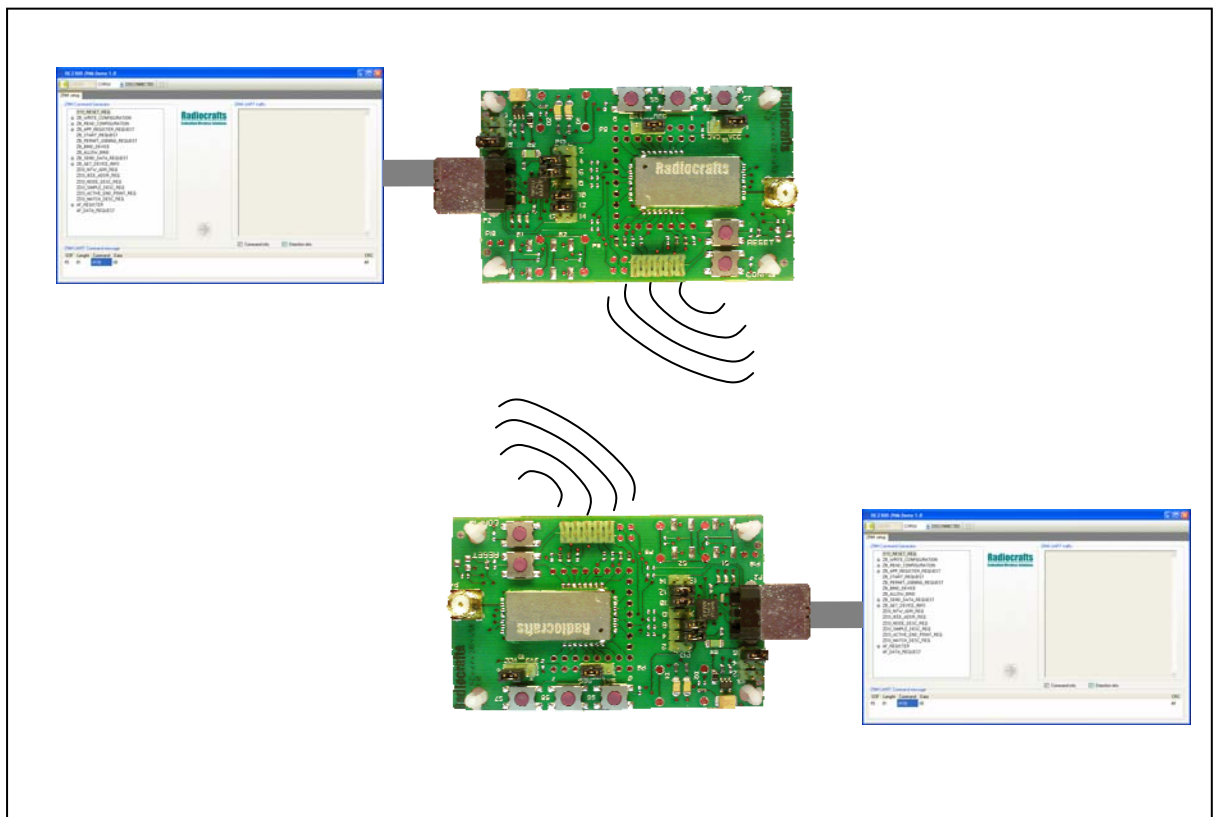
## Screen Settings

It is recommended to run the application with screen size at least 1024x768 and font resolution 96dpi.

## Introduction

The ZNM-CCT helps you to work with the Radiocrafts RC24xx-ZNM ZigBee Network Module series. The program enables you to easily configure the module and send or receive in the ZigBee network.

## Getting started with ZNM-CCT



**Figure 1 RC24xx-ZNM demo board with ZNM-CCT window**

Connect the DB, or your own hardware with the Radiocrafts module, to the COM-port. Start the ZNM-CCT application and the main window should look similar to what is shown in Figure 1.

The first setup in the ZNM-CCT is to select the connected module com port. See Figure 2

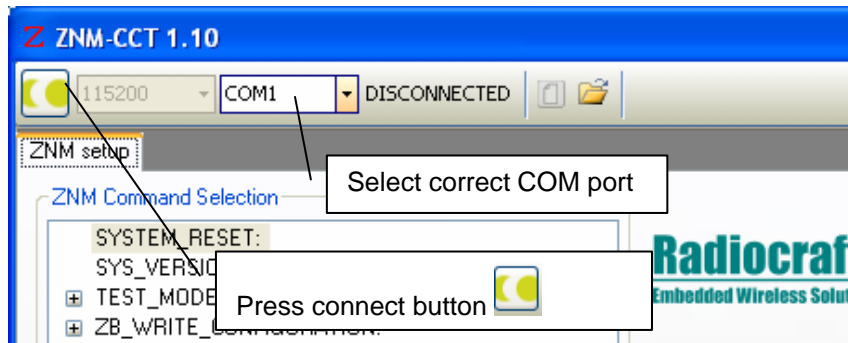


Figure 2. Connecting to the module

## Main window, GUI

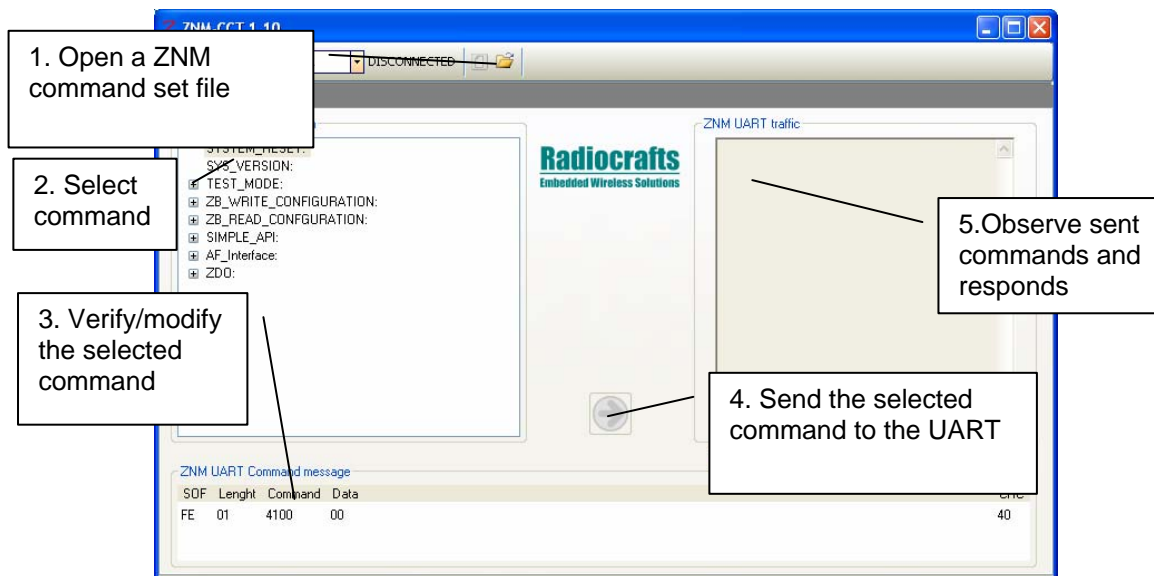


Figure 3. The boards are configured via a 4 step procedure using the ZNM-CCT tool

The use of the main window GUI consists of 5 easy steps:

- 1. Select command file**  
ZNM Command files are a set of pre-stored commands that can be sent to the module. Several ZNM command files are included with the installation, but the user can also modify or make his own ZNM command file that may be more suitable for his application. See chapter *ZNM Command File* for more details on making/modifying command files
- 2. Select the command** in the command hierarchy menu on left side
- 3. Modify the command** (if needed) in lower part of screen
- 4. Send the selected command to the UART**
- 5. Observe sent commands and responds**

4. **Press send** arrow (in center of screen) to send the command to the connected Modules UART interface
5. **Observe sent and received commands** on right side of screen

### ZNM Command File

The ZNM command filename must start with 'ZNM\_Command' to be recognised by ZNM-CCT. The ZNM command file is a text file (\*.txt) with the following format for each line:

Each line is coded as:

**<Hierarchy sign>** **<NAME>**: **<Command in hex>**; (**<info to user>**)

**Hierarchy sign** can be

- \* New main entry (Level 0 in command menu)
- + Level 1 entry, sorted under last level 0 entry
- ++ Level 2 entry, sorted under last level 1 entry
- +++ Level 3 entry, sorted under last level 2 entry

**NAME** is a description of the command and used by the command selection menu to represent the command name.

**Command in hex** is ASCII representation of the hex code to be sent via UART.

The command must be according to interface specified in the RC2400-ZNM User Manual. Note that the hex shall not include length field and CRC. These are calculated automatically by the program.

**Info to user** is help text for the user of ZNM-CCT. When a command is selected in the command selection menu, the info is displayed together with hex command in lower part of the window. The '(' and ')' signs must be included even if no info to user is written.

Here is an example of a ZNM command file

```
*SYSTEM_RESET:FE410000;(This is the SW reset command)
*ZB_WRITE_CONFIGURATION:FE2605;()
+START_UP_OPTIONS:FE260503;()
++Clear device on reset:FE2605030103;()
+LOGICAL_TYPE:FE410000;()
++Coordinator:FE2605870100;()
*ZB_READ_CONFIGURATION:FE410000;()
+ENABLE_SECURITY:FE260464;()
*SIMPLE_API:FE0000;()
```

And the selection menu in the ZMC-CCT will look like this:

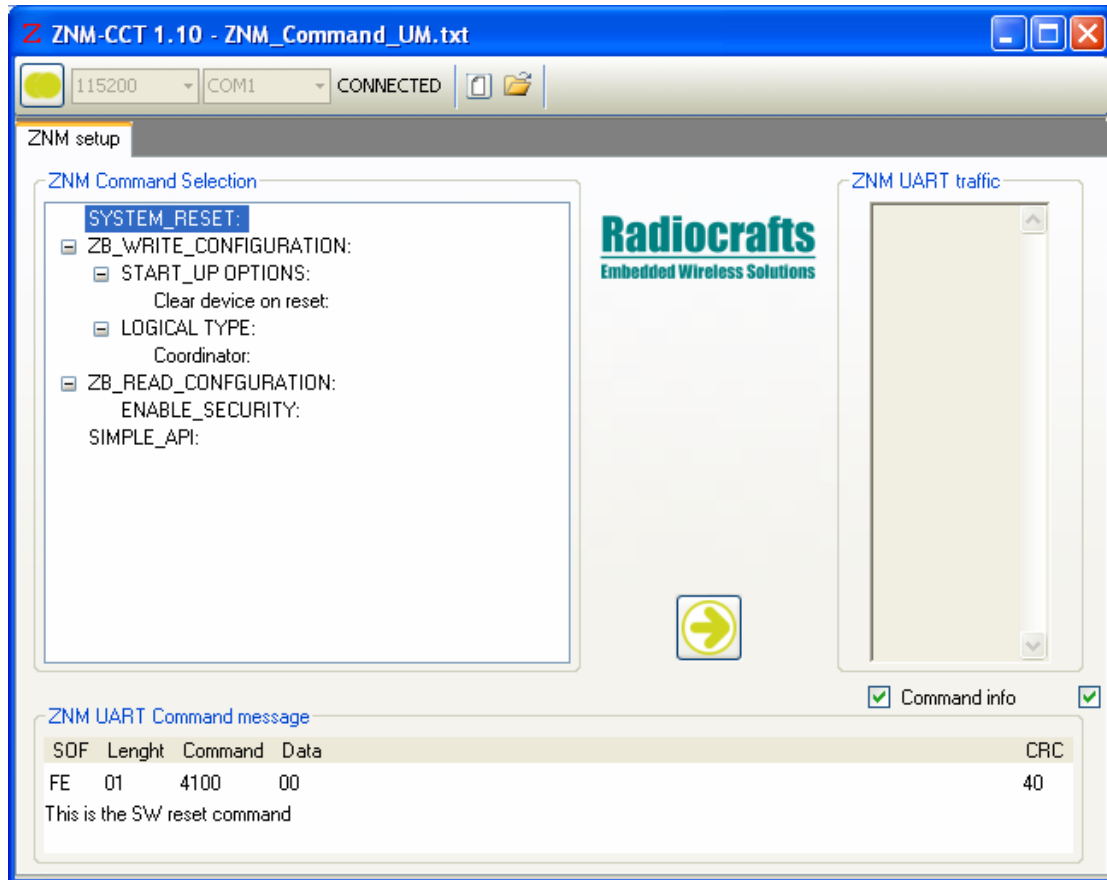


Figure 4 Selection menu when ZNM Command file is as in previous example

### Step by Step Example

This is a step-by-step example for setting up a ZigBee network with two nodes. The example uses the default command file.

For the first board (Coordinator), send the following commands to the module (In the order they appear):

- SYSTEM\_RESET
- ZB\_WRITE\_CONFIGURATION -> Start-up options -> Clear device on reset
- SYSTEM\_RESET
- ZB\_WRITE\_CONFIGURATION -> Logical\_type -> Coordinator
- SIMPLE\_API -> ZB\_APP\_REGISTER\_REQUEST-> ZB\_APP\_REGISTER\_DUMMY\_SERVER
- SIMPLE\_API -> ZB\_START\_REQUEST

```
NM UART traffic
PC-->ZNM:(SYSTEM_RESET)
FE 01 41 00 00 40
ZNM-->PC:
FE 06 41 80 02 02 00 02 03 00 C6
PC-->ZNM:(ZB_WRITE_CONFIGURATION->START_UP OPTIONS->Clear
device on reset)
FE 03 26 05 03 01 03 21
ZNM-->PC:
FE 01 66 05 00 62
PC-->ZNM:(SYSTEM_RESET)
FE 01 41 00 00 40
ZNM-->PC:
FE 06 41 80 02 02 00 02 03 00 C6
PC-->ZNM:(ZB_WRITE_CONFIGURATION->LOGICAL TYPE->Coordinator)
FE 03 26 05 87 01 00 A6
ZNM-->PC:
FE 01 66 05 00 62
PC-->ZNM:(SIMPLE_API->ZB_APP_REGISTER_REQUEST->
ZB_APP_REGISTER_DUMMY_SERVER)
FE 0D 26 0A 01 01 01 01 02 01 00 01 01 00 01 00 01 22
ZNM-->PC:
FE 01 66 0A 00 6D
PC-->ZNM:(SIMPLE_API->ZB_START_REQUEST)
FE 00 26 00 26
ZNM-->PC:
FE 00 66 00 66
ZNM-->PC:
FE 01 45 C1 09 8C FE 01 46 80 00 C7
```

Figure 5 Traffic for first board (coordinator)

For the second boards (Router) send the following commands (In the order they appear):

- SYSTEM\_RESET
- ZB\_WRITE\_CONFIGURATION -> Start-up options -> Clear device on reset
- SYSTEM\_RESET
- ZB\_WRITE\_CONFIGURATION -> Logical\_type -> Router
- SIMPLE\_API -> ZB\_APP\_REGISTER\_REQUEST-> ZB\_APP\_REGISTER\_DUMMY\_CLIENT
- SIMPLE\_API -> ZB\_START\_REQUEST

```
ZNM UART traffic
PC-->ZNM:(SYSTEM_RESET)
FE 01 41 00 00 40
ZNM-->PC:
FE 06 41 80 02 02 00 02 03 00 C6
PC-->ZNM:(ZB_WRITE_CONFIGURATION->START_UP
OPTIONS->Clear device on reset)
FE 03 26 05 03 01 03 21
ZNM-->PC:
FE 01 66 05 00 62
PC-->ZNM:(SYSTEM_RESET)
FE 01 41 00 00 40
ZNM-->PC:
FE 06 41 80 02 02 00 02 03 00 C6
PC-->ZNM:(ZB_WRITE_CONFIGURATION->LOGICAL TYPE->
Router)
FE 03 26 05 87 01 01 A7
ZNM-->PC:
FE 01 66 05 00 62
PC-->ZNM:(SIMPLE_API->ZB_APP_REGISTER_REQUEST->
ZB_APP_REGISTER_DUMMY_CLIENT)
FE 0D 26 0A 01 01 01 01 03 01 00 01 00 01 01 01 00
23
ZNM-->PC:
FE 01 66 0A 00 6D
PC-->ZNM:(SIMPLE_API->ZB_START_REQUEST)
FE 00 26 00 26
ZNM-->PC:
FE 00 66 00 66
ZNM-->PC:
FE 01 45 C1 05 80 FE 01 45 C1 07 82 FE 01 46 80 00
C7
```

Figure 6 Traffic for second board (router)

You have now created a ZigBee network with two devices!!

The router can now send data to the coordinator with the command:  
ZB\_SEND\_DATA->coordinator

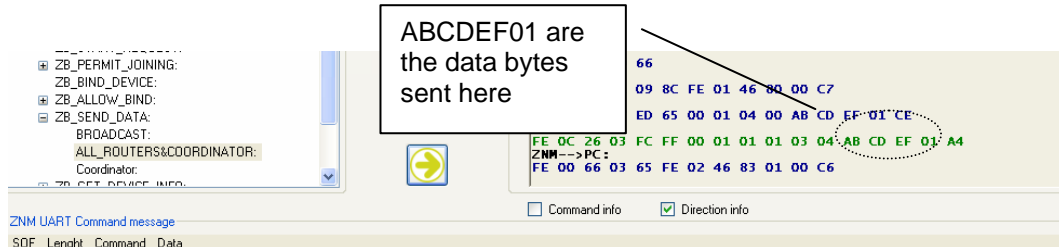
The screenshot shows the ZNM UART interface with the following command selected: ZB\_SEND\_DATA->coordinator. The command message is displayed as: FE 0C 2603 0000000101010304ABCDEF01. A callout box points to the data bytes 'ABCDEF01' in the command message, stating 'ABCDEF01 are the data bytes sent here'. The UART traffic log shows the command being sent to the PC and the response from the PC.

Figure 7 Sending data from router

The coordinator now receives this data:

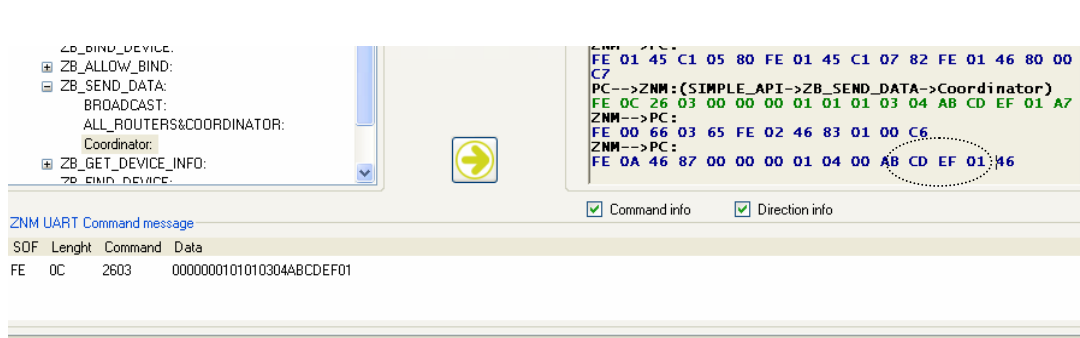
The screenshot shows the ZNM UART interface with the received data displayed: FE 0A 46 87 ED 65 00 01 04 00 AB CD EF 01 CE. The data bytes 'AB CD EF 01 CE' are highlighted in the received message, corresponding to the data sent by the router in the previous figure.

The coordinator can now send data to the router with the command:  
**ZB\_SEND\_DATA\_REQUEST-> all routers and coordinator**



**Figure 8 Sending data from coordinator**

The router now receives this data



You have now created a ZigBee network and sent data between two devices.

## Document Revision History

Document Revision	Changes
1.0	First release
1.1	Added step-by-step example

## Disclaimer

Radiocrafts AS believes the information contained herein is correct and accurate at the time of this printing. However, Radiocrafts AS reserves the right to make changes to this product without notice. Radiocrafts AS does not assume any responsibility for the use of the described product; neither does it convey any license under its patent rights, or the rights of others. The latest updates are available at the Radiocrafts website or by contacting Radiocrafts directly.

As far as possible, major changes of product specifications and functionality, will be stated in product specific Errata Notes published at the Radiocrafts website. Customers are encouraged to check regularly for the most recent updates on products and support tools.

## Trademarks

All other trademarks, registered trademarks and product names are the sole property of their respective owners.

## Life Support Policy

This Radiocrafts product is not designed for use in life support appliances, devices, or other systems where malfunction can reasonably be expected to result in significant personal injury to the user, or as a critical component in any life support device or system whose failure to perform can be reasonably expected to cause the failure of the life support device or system, or to affect its safety or effectiveness. Radiocrafts AS customers using or selling these products for use in such applications do so at their own risk and agree to fully indemnify Radiocrafts AS for any damages resulting from any improper use or sale.

© 2010, Radiocrafts AS. All rights reserved.

## Contact Information

Web site: [www.radiocrafts.com](http://www.radiocrafts.com)

Address:

**Radiocrafts AS**  
Sandakerveien 64  
NO-0484 OSLO  
NORWAY

Tel: +47 4000 5195

Fax: +47 22 71 29 15

E-mails: [radiocrafts@radiocrafts.com](mailto:radiocrafts@radiocrafts.com)  
[sales@radiocrafts.com](mailto:sales@radiocrafts.com)  
[support@radiocrafts.com](mailto:support@radiocrafts.com)